

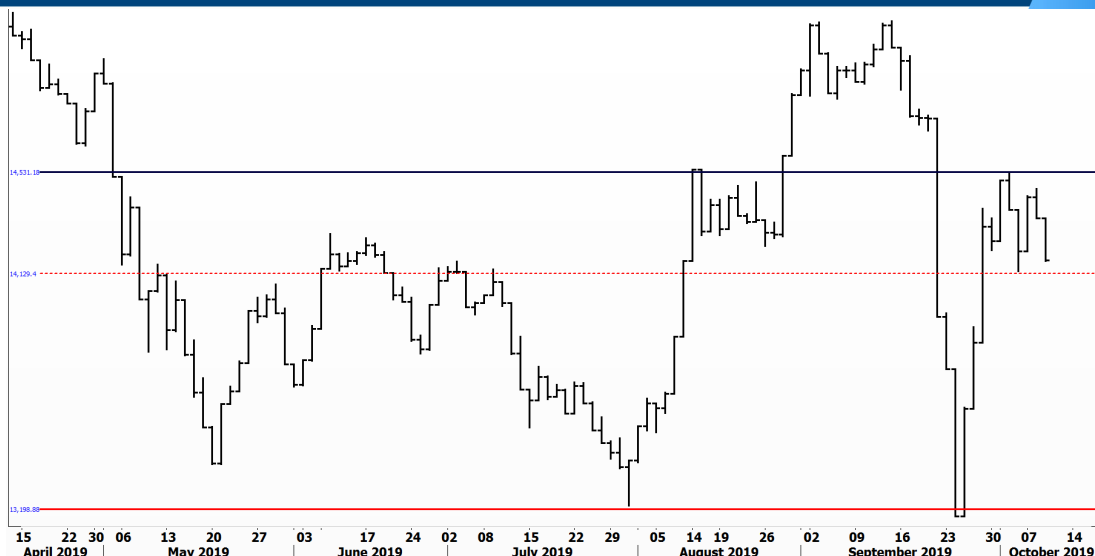


PIONEERSECURITIES

# TECH TO THE POINT

10-Oct-19

This report must be read with the disclaimer  
on the last page



Last	14,182.70
High Today	14,348.57
Low Today	14,180.43
Volume	M 81.754
First Support	14,150.00
Second Support	14,000.00
First Resistance	14,550.00
Second Resistance	14,800.00
Stop Loss	14,150.00
<b>HISTORICAL RETURN %</b>	
1 WEEK	-1.38%
1 MONTH	-4.73%
1 QUARTER	1.21%
1 YEAR	4.37%
YTD	8.80%

## Analysis

The EGX 30 index closed at 14,182 and is testing its support and stop; a rebound from current levels should occur as a break below 14,150 will be short-term bearish. Thus, we are expecting the market to rebound from here. If, however, the index breaks below its support, our stop will be hit and the next target will be set around 13,400-13,500.

As we just mentioned, we believe that the 14,150 will be able to halt the current decline. Our entry will be triggered and confirmed at the breakout of the peak that lies at 14,500.

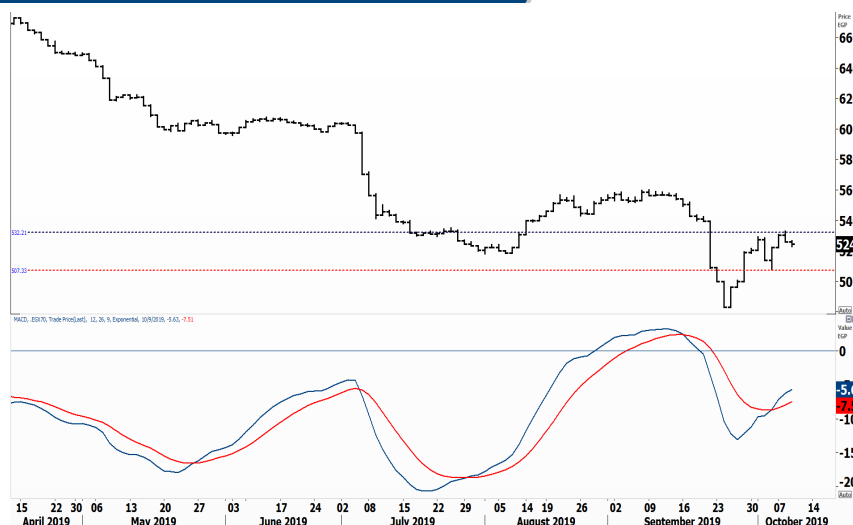
## Egyptian Exchange Small Caps Index EGX70

### Analysis

We have not analyzed the EGX 70 index since sometime for many reasons, the most important one is the way this index is calculated (as we mentioned before).

The index, however, began lately to show significant improvement, and is preparing itself for a strong rise. Our momentum indicators began to show positive action both on the daily and weekly charts, and selling pressure is diminishing significantly.

First of all, let us place our stop below 507; thus, as long as the EGX 70 index is trading above this level, we recommend stepping in. As for our confirmed short-term entry signal; this will be triggered at a breakout above 530-532. Our target will be then set around 560.



## Resistance



Broke 4.25 with high volumes and closed at 4.28 at the end of the session. Volumes were high yesterday, but we need to see a breakout confirmation today. Our target is set near 5.

## Support

No stocks broke their support yesterday

## Testing

### Support



Classically, ESRS witnessed a bullish action by filling its gap and rebounding to close at 12 at the end of the session. It is important to watch the stock, however, trading above 12 today so it continues its upward move. As we mentioned before, our recommendation is to buy the dips.



The 2.55 is the current support for EGTS. A break below this level will trigger stops. We do not recommend stepping in unless a clear rebound occurs from support.

## Resistance

Symbol	S. Description	Last	Support 1	Support 2	Resistance 1	Resistance 2	Trend	Recommendation	Stop Loss/ Re-Entry
COMI.CA	COM INTL BK/d	79.00	77.00	74.00	80.00	83.00	↔	Hold	80.00
EAST.CA	EASTERN CO/d	16.00	15.85	15.00	16.70	17.40	↔	Hold	15.85
SWDY.CA	ELSWEDY ELECTR/d	12.87	12.60	11.92	13.75	15.17	↔	Hold	13.75
TMGH.CA	TALAT MOSTAFA/d	9.89	9.80	9.30	10.75	11.15	↔	Hold	10.75
SKPC.CA	SIDI KERIR PET/d	9.20	8.70	8.00	9.60	10.85	↔	Hold	9.60
EKHO.CA	EGYPT KUWAIT H/d	1.40	1.37 \$	1.29 \$	1.44 \$	1.52 \$	↔	Hold	1.44
HRHO.CA	EFG HERMES HOL/d	18.01	17.50	17.00	19.70	20.60	↔	Hold	19.70
ORAS.CA	ORASCOM CONST/d	101.11	100.00	95.00	111.00	117.00	↔	Hold	111.00
AMOC.CA	ALX MINERAL OI/d	4.25	3.96	3.60	4.35	4.70	↔	Hold	4.35
MNHD.CA	NASR CITY HOUS/d	4.59	4.40	4.00	4.65	5.05	↓	P.SELL	4.65
CIRA.CA	Cairo Investment & Real Estate	12.88	12.70	11.50	13.50	15.00	↑	Hold	11.50
OCDI.CA	6TH OCT DEV IN/d	14.88	14.80	14.25	15.90	16.50	↔	Hold	15.90
JUFO.CA	JUHAYNA FOOD I/d	8.55	8.00	7.70	10.00	11.00	↔	Hold	10.00
ESRS.CA	EZZ STEEL/d	12.00	11.25	10.00	13.55	15.50	↔	P.Buy	11.25
ETEL.CA	TELECOM EGYPT/d	11.68	11.60	11.20	12.30	12.90	↔	Hold	12.30
CCAP.CA	CITADEL CAPITA/d	2.44	2.30	2.12	2.60	2.75	↔	Hold	2.60
ISPH.CA	IBNSINA PHARMA	10.15	9.30	8.80	10.50	11.15	↔	Hold	10.50
PHDC.CA	PALM HILL DEV /d	2.04	2.03	1.90	2.20	2.43	↔	Hold	2.20
CLHO.CA	CLEOPATRA HOSPITAL COMPANY	6.20	5.90	5.55	6.60	7.06	↔	P.Buy	5.90
HELI.CA	HELIOPOLIS/d	27.10	25.50	24.40	27.55	29.20	↔	Hold	26.70
CIEB.CA	CREDIT AGRICOL/d	43.02	40.00	38.00	45.00	47.00	↔	Hold	40.00
EGCH.CA	EGYPT CHEM IND/d	5.38	4.90	4.40	5.55	5.80	↔	Hold	5.55
EMFD.CA	EMAAR MISR DEV/d	3.06	2.94	2.70	3.23	3.45	↔	Hold	3.23
OIH.CA	ORASCOM INVESTMENT HOLDING	0.59	0.54	0.50	0.60	0.64	↓	P.SELL	0.60
ORHD.CA	ORASCOM EGYPT/d	6.62	6.45	5.95	6.88	7.30	↔	Hold	6.88
EGTS.CA	EGYPTIAN RESOR/d	2.65	2.55	2.38	3.04	3.25	↔	Hold	2.55
ORWE.CA	ORIENTAL WEAVE/d	10.30	10.00	9.50	11.09	11.34	↔	Hold	9.50
IRON.CA	EGYPTIAN IR & /d	2.85	2.51	2.15	2.89	3.10	↔	Hold	2.89
ADIB.CA	ABU DHABI/d	12.28	12.15	11.50	13.33	14.50	↔	Hold	13.33

## Guidelines



**Bullish**



**Bearish**



**Neutral**

Trend: (Upgrade, Downgrade): Change in trend color refers to upgrade or downgrade in the trend relative to the previous trend direction. E.g. change from "↓ Down" to "↔ Flat" is considered an upgrade and vice versa.

Buy: Buy the full position.

P.Buy: Buy portion of a position

Hold: Don't Buy or sell.

P.SELL: Sell portion of a position.

Sell: Sell the full position.

Stop Loss: Completely exit the position (or) Re-entry in cases of Selling.

## Disclaimer

This report has been prepared according to the general data available for public, in accordance with the professional standards applied in that career to the best knowledge of the reporter. The recommendations mentioned are a guiding tool representing a professional opinion, and not granting any profits, consequently it is not obligatory for our valued customers and investors. Pioneers Securities©, Egypt shall not be liable for any direct, indirect, incidental, or consequential damages, including limitation losses, lost revenues, or lost profits that may result from these materials. Republishing this report or any of its contents is subject to prior approval; referring to the source is a must. Opinions expressed are subject to change without notice and may differ or be contrary to the opinions or recommendations of Pioneers Securities©, Egypt Research or the opinions expressed by other business areas or groups of Pioneers Securities©, Egypt as a result of depending solely on the historical technical behavior (price and volume).

## Technical Analysis Department

### Saleh Nasser

Chief Technical Strategist

### Ahmed Hassan

Senior Technical Analyst

### Dina Fahmy

Senior Technical Analyst

### Tips on reading the report

The first page includes an analysis of two major indices in the Egyptian Stock Market; the norm is that we will analyze both the EGX 30 and 70, but sometimes we will compare the EGX 30 to its 50 counterpart if there is important information in this comparison. We also use the Hermes Last Index interchangeably with the EGX 30. The .HRMSL index has an important edge; it uses last prices instead of VWAP. First thing our clients should do is to read the indices analysis carefully to have a clear understanding on our overall view.

The second page includes stocks that broke out beyond their resistance levels, and those that violated their support levels. It also includes stocks that are testing their support levels and those that are testing their resistance. This analysis is important and it is the core of our recommendations. It is important to note though that not all stocks that are testing their support levels are bullish, and not all that are testing their resistance levels are bearish. To make it easier for our clients, we have placed a bull face 🐂 if we consider the stock under study bullish, and a bear face 🐻 if we consider it bearish. We also added a big bullet 📌 if we are neutral.

It is important to note that you might find a stock that we consider bullish in our analysis (in the breakouts/testing section) but it remains as a hold or partial sell in the table. The conflict here is that the table is more conservative. This will not be an issue with our clients, because our analysis will explain why we are being bullish/bearish on the stock.